

CLIMATE ACTION PLAN 2014-2017



Table of Contents

Background	1
Greenhouse Gas Emissions	1
Greenhouse Gas Summary	1
LEED Projects 2010 to 2013	2
Additional Accomplishments	3
Goals 2014 - 2017	4
University Sustainability Committee and Climate Action Plan Subcommittee.....	6

Salisbury University Climate Action Plan



UNIVE

Climate Action Plan 2014-2017

Background

The Climate Action Plan (CAP) was initiated in 2007 when Salisbury University President Janet Dudley-Eshbach signed the Presidents' Climate Commitment, a pledge that Salisbury University would embark on a path toward climate neutrality. Released in 2010, the CAP provided a roadmap for the SU campus to reduce carbon emissions to a net of zero and achieve carbon neutrality by the year 2050. Implementation of the CAP and related sustainability initiatives is guided by the University Sustainability Committee (USC). The USC was established by President Dudley-Eshbach in 2008 and is a team comprised of students, faculty and staff representing schools and departments from across the campus.

This 2014 update does not repeat all of the elements presented in the 2010 document, which is available in PDF format online at: www.salisbury.edu/sustain/campus/climateactionplan.html. Instead, this document focuses on the progress of the CAP effort during the first four years and adjustments to the CAP moving forward. As stated in the 2010 CAP, this is a living document that will be revisited on a regular basis to reflect successes and lessons learned along the way.

Greenhouse Gas Emissions

In 2008, a group of students from Salisbury University's Small Business and Technology Development Center (SBTDC) and the Business, Economic and Community Outreach Network (BEACON) conducted a comprehensive inventory of greenhouse gas emission sources in accordance with the requirements of the Presidents' Climate Commitment. The scope of the inventory included collecting data associated with electricity, fuel combustion, commuting, air travel, fleet vehicles, solid waste, refrigerants and certain other chemicals associated with global warming. The greenhouse gas (GHG) inventory, also referred to as a "carbon footprint," was developed using the Clean Air-Cool Planet (CA-CP) Campus Carbon Calculator tool, which converts GHG data into metric tons carbon dioxide equivalent emissions, or MTeCO₂.

Emission data from FY05 was selected as the baseline from which progress toward carbon neutrality would be measured. In large part, FY05 data was selected because Maryland energy reduction requirements also use FY05 as the baseline. Interim milestones for emissions were established as follows:

15%	2012
25%	2015
30%	2020
50%	2025
100%	2050

Greenhouse Gas Summary

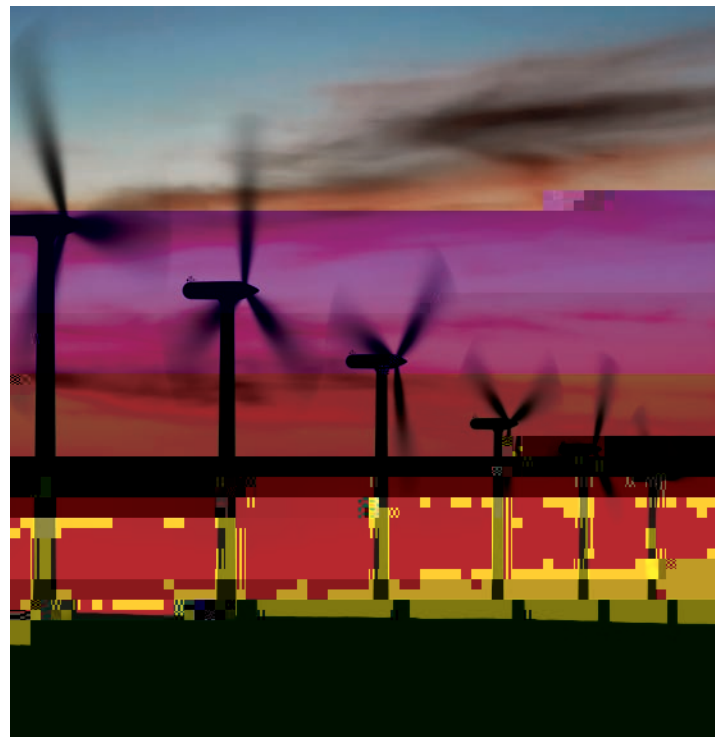
In fiscal year 2012, there was a net reduction of 2,027.38 metric tons of carbon dioxide equivalent greenhouse gases, which represents a 7.6 percent reduction in comparison to the 2005 baseline emissions. While the 7.6 percent GHG emission reduction appears modest, campus enrollment increased by 25.6 percent during this period and total building square feet increased by 52.7 percent. This normalized data affirms a significant improvement in building energy efficiency as a result of the comprehensive housing renovation projects and new construction to LEED Silver or Gold levels.

Greenhouse Gas Summary Chart

Fiscal Year	GHG Emissions (MT)	Baseline Change (MT)	Percent Change (MT)	FTES Enrollment	Total Building Square Feet
2005	26678.00	N/A	N/A	6277	1444989
2008	26413.62	-264.38	-.99%	7074	1444989
2010	24841.62	-1836.38	-6.88%	7747	1871731
2011	26672.62	-5.38	-.02%	7716	1889463
2012	24650.62	-2027.38	-7.60%	7881	2206748

Normalized Comparison to Baseline

- Change in GHG emissions per 1,000 sq.ft. building space: -39.50%
- Change in GHG emissions per full-time enrollment (FTE): -26.35%



Additional Accomplishments 2010 to 2013

Salisbury University was included SU in the *Best of Maryland*, the fourth consecutive year Salisbury University has received this accolade for teaching and demonstrating environmental responsibility. Salisbury University is also an active participant in the College Climate Action Group along with representatives from 19 other Maryland schools to discuss ways to reduce greenhouse gas emissions. The Climate Change Division of the Maryland Department of Education's Air and Radiation Management Administration created the panel.

Beginning in January 2012, Salisbury University initiated a food waste composting program, which engaged the services of a local company, Blue Hen Organics. The composting program reduced waste sent to the landfill by 304 tons in FY12. The conversion of this material into a soil amendment represents a 30 percent reduction in the total amount of landfilled material over FY11.

In an effort to reduce plastic bottle waste on campus, campus students requested water bottle filling stations. A pilot project was initiated in fall 2011. Due to the favorable reception by students, faculty and staff, the program has been expanded to 22 filling stations across campus, and additional locations will be developed as budgets allow.

The University marked a milestone in its recycling program in 2012. The campus achieved a 51 percent recycling rate, up from 27 percent in 2011. This dramatic increase is credited to a combination of the Student Government Association's aggressive Recycle Madness campaign, Residence Life's participation in Recycle Mania and a 30 percent decrease in solid waste attributed to the composting program.

Motorpool has acquired 10 hybrid vehicles and, based on the fuel efficiency and reliability of these vehicles, plans to continue to purchase hybrids as older vehicles are replaced. University Police reported an average increase from 10 to 20 miles per gallon using their hybrid police vehicle compared to a traditional police vehicle.

Salisbury University joined with the City of Salisbury and Bike SBY, a community group, to develop a bike path that connects the campus with the Salisbury Downtown Plaza. Leveraging funds from Salisbury University and Sea Gull Century, Bike SBY was able to secure matching funding from the Maryland Department of Transportation. Termed the "Orange Route" by Bike SBY, the path is the first phase of a formal plan to develop better and safer connectivity for community cyclists. The Orange Route officially opened on September 5, 2013.

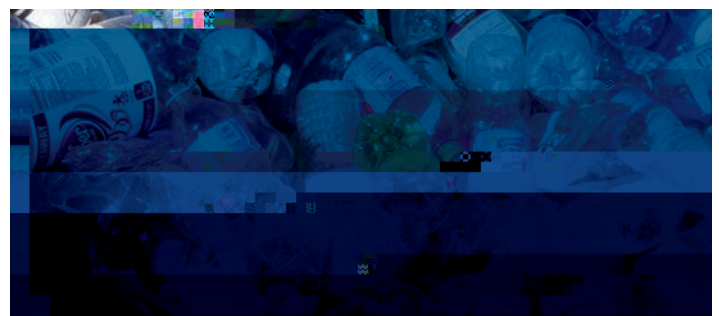
Salisbury University's non-recyclable materials are disposed at Newland Park Landfill. Wicomico County has an agreement with Ingenco to use methane gas from the Newland Park Landfill to

produce renewable energy. In an effort to offset the carbon emission from the decomposition of this trash, the University has committed to purchase 8,000 renewable energy credits (RECs) produced at the landfill in 2013. The estimated landfill gas being destroyed to produce 8,000 RECs is the environmental equivalent of the annual greenhouse gas emissions from 7,552 passenger vehicles, the carbon dioxide emissions from burning 210 railcars of coal or the energy benefit of powering 539 homes.

Salisbury University has developed and expanded several academic and research programs that directly relate to sustainability and climate issues. These include the establishment of the Department of Environmental Studies and related faculty hires; development of the Blackwell Library Sustainability Research Guide (www.salisbury.libguides.com/sustainability); several new courses and a sustainability-related course list; expansion of SU's Green Living-Learning Community and clubs and organizations related to sustainability; growth of research and outreach centers like the Eastern Shore Regional GIS Cooperative (www.esrgc.org) and Shore Energy (www.salisbury.edu/shoreenergy) and research programs on smart growth, biofuels and sustainable agriculture and land-use; and an assessment of and recommendations for the campus relative to AASHE's STARS criteria (conducted by environmental studies students as their capstone experience).

Salisbury University's Residence Life and Sustainability offices purchased and installed four bicycle Fixit stations on campus. Each Fixit station includes all the tools necessary for cyclists to perform basic repairs and maintenance. There is also a quick read (QR) code to access detailed maintenance instructions on smart phones.

In 2013, the Maryland Department of the Environment recognized Salisbury University with the Maryland Green Registry Leadership Award. Each year, the award is presented to a K-12 or higher education organization that demonstrates a commitment to environmental performance, a green team that meets regularly, annual environmental goals and measurement of results.



Climate Action Plan (2014-2017)

Goal 1: Develop administrative policies to facilitate sustainable operations on campus

1. Develop a procurement sustainability policy.

- a. Establish a standard for paper recycle content.
- b. Purchase of Energy Star appliances.
- c. Purchase of EPEAT electronics.
- d. Make environmentally preferred purchases.
- e. Advocate teleconferencing for distance meetings.

2. Develop a green housekeeping policy.

3. Develop a low-emission/high-mileage fleet vehicle policy.

- a. Provide vehicle user education.
- b. Develop an "environmentally preferred" list of vehicles.
- a. Provide user education.

c.

President & Executive Staff

Dr. Janet Dudley Eshbach.....President
Dr. Diane Allen.....Senior Vice President of Academic Affairs and Provost
Betty Crockett.....Vice President of Administration and Finance
Dr. Dane Foust.....Vice President of Student Affairs
T. Greg Prince.....Vice President of Advancement and External Affairs
Amy Hasson.....Chief of Staff
Robert Sheehan.....Deputy Chief of Staff, Director of Government
and Community Relations

University Sustainability Committee

Betty Crockett.....Vice President of Administration and Finance, co-chair USC
Amy Hasson.....Chief of Staff, co-chair USC
Dr. Karen Olmstead.....Dean, Henson School
William Nelson.....Fulton School
Dr. Shawn McEntee.....Fulton School
Dr. Leonard Arvi.....Perdue School
Dr. Sarah Surak.....Fulton School
Michael English.....Library
Lisa Gray.....Staff Senate
Will Barron.....SGA Vice President for Sustainability
Eric Berkheimer.....Associate Vice President of Facilities and Capital Management
Kevin Mann.....Director of Physical Plant
Jeffrey Downes.....Director of Facilities Planning and Capital Projects
Wayne Shelton.....Director of Sustainability and Environmental Safety
Tonia Nixon.....Director of Purchasing and Contracting
Dave Gutoskey.....Director of Housing and Residence Life
Melissa Boog.....Assistant Vice President for Academic Affairs
Sue Eagle.....Assistant Vice President of Marketing and Public Relations
Dr. Danny Ervin.....Shore Energy and Perdue School

Climate Action Planning Subcommittee

Betty Crockett.....Vice President of Administration and Finance
Tonia Nixon.....Director of Purchasing and Contracting
Lora Bottinelli.....Director of Ward Museum
Dr. Karen Olmstead.....Dean, Henson School
Dr. Aaron Hogue.....Henson School
Dr. Karl Maier.....Fulton School
William Nelson.....Fulton School
Dr. Shawn McEntee.....Fulton School
Dr. Sarah Surak.....Fulton School
Kevin Mann.....Director of Physical Plant
Tim Jones.....Energy Manager
Dr. Danny Ervin.....Shore Energy and Perdue School
Ken Kundell.....Information Technology
Dr. Edward Robeck.....Seidel School
Dr. Joseph Howard.....Henson School
Colleen Kirby.....Fleet Coordinator